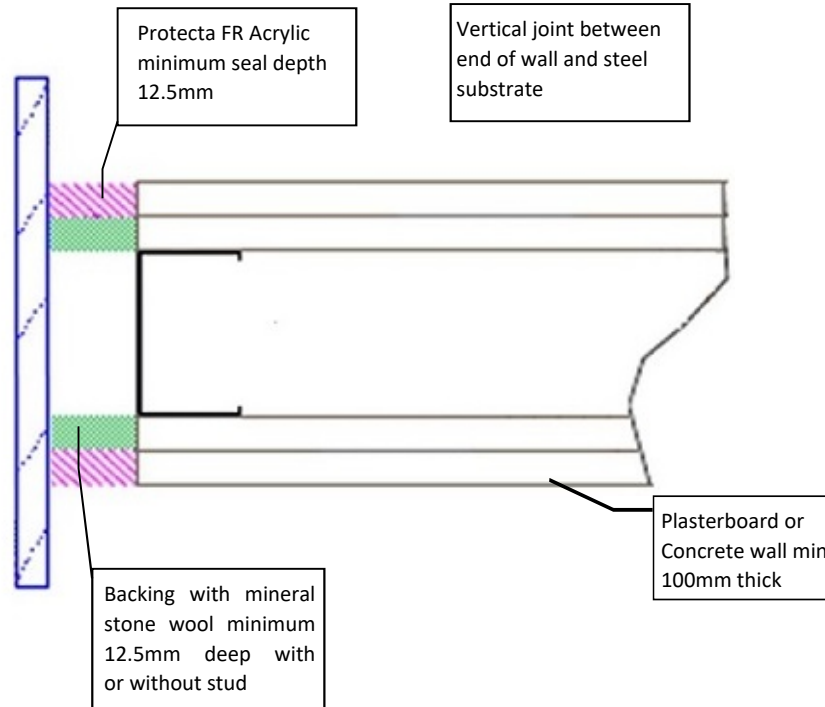


Protecta FR Acrylic - Plasterboard or Concrete Wall End of wall to steel column or steel formwork

System/FPA Register ID# FC510

Installation Instructions

1. Before installing Protecta® FR Acrylic ensure that the surface of all surrounding construction is free from all loose contaminants, dust and grease.
2. Where Protecta® FR Acrylic is to be installed against surfaces that cannot tolerate direct contact; appropriate surface preparation should be made (contact Polyseam for guidance in these cases). For paints sensitive to sealing compounds, priming with a PVA primer is recommended.
3. When installing the sealant in gypsum boards, the exposed edges of the board can be wetted with water, or Protecta® FR Acrylic diluted with water to prime the surfaces helping adhesion and preventing excessive joint shrinkage.
4. When installing any backing material, cut this slightly oversize and insert into the gap ensuring a tight friction fit. Ensure correct depth is achieved.
5. Fill the gap or joint with Protecta® FR Acrylic to the required depth.
6. Apply the sealant generously to prevent air bubbles. Finish the bead with a moist spatula, pallet knife or brush.
7. Protecta® FR Acrylic can be over-painted with most emulsion or alkyd (gloss) paints.



Products	Protecta FR Acrylic Stone wool
Application	Fire rated linear seals in flexible or rigid walls
Construction	Minimum wall thickness of 100 mm and comprise steel studs or timber studs lined on both faces with minimum 2 layers of 12.5 mm thick boards.

Fire & Sound classification	
12.5mm Acrylic plus 12.5mm stone wool 35kg/m ³ both sides (or 25mm Acrylic both sides) with or without stud. Max gap 30mm. FRR -/120/60	
NB: Thermal Rating determined by the rating of the steel substrate. Where the steel has a lower rating than 60 minutes, then the FRR must be reduced accordingly.	
ZERO smoke leakage up to 200Pa	
Sound reduction (seal only)	STC 62

As a part of our policy of on-going product development and testing, we reserve the right to modify, alter or change product specifications without giving notice. All information contained in this document is given in good faith and is provided for guidance only. Any drawings provided are for illustrative purposes only. As Polyseam has no control over the methods or competence of installation and of prevailing site conditions, no warranties, expressed or implied, is intended to be given as to the actual performance of the product mentioned or referred to herein and no liability whatsoever will be accepted for any loss, damage or injury arising from the use of the information given.

For all technical details on the products specified please refer to the technical data sheets that can be found on www.firestopcentre.co.nz

Signed and approved:



Protecta®

Polyseam Ltd, 15 St Andrews Road,
Huddersfield, West Yorkshire, HD1 6SB

Sheet size: A4	Drawn date & no: 8/4/20
Scale: NTS	Drawn by: K.B